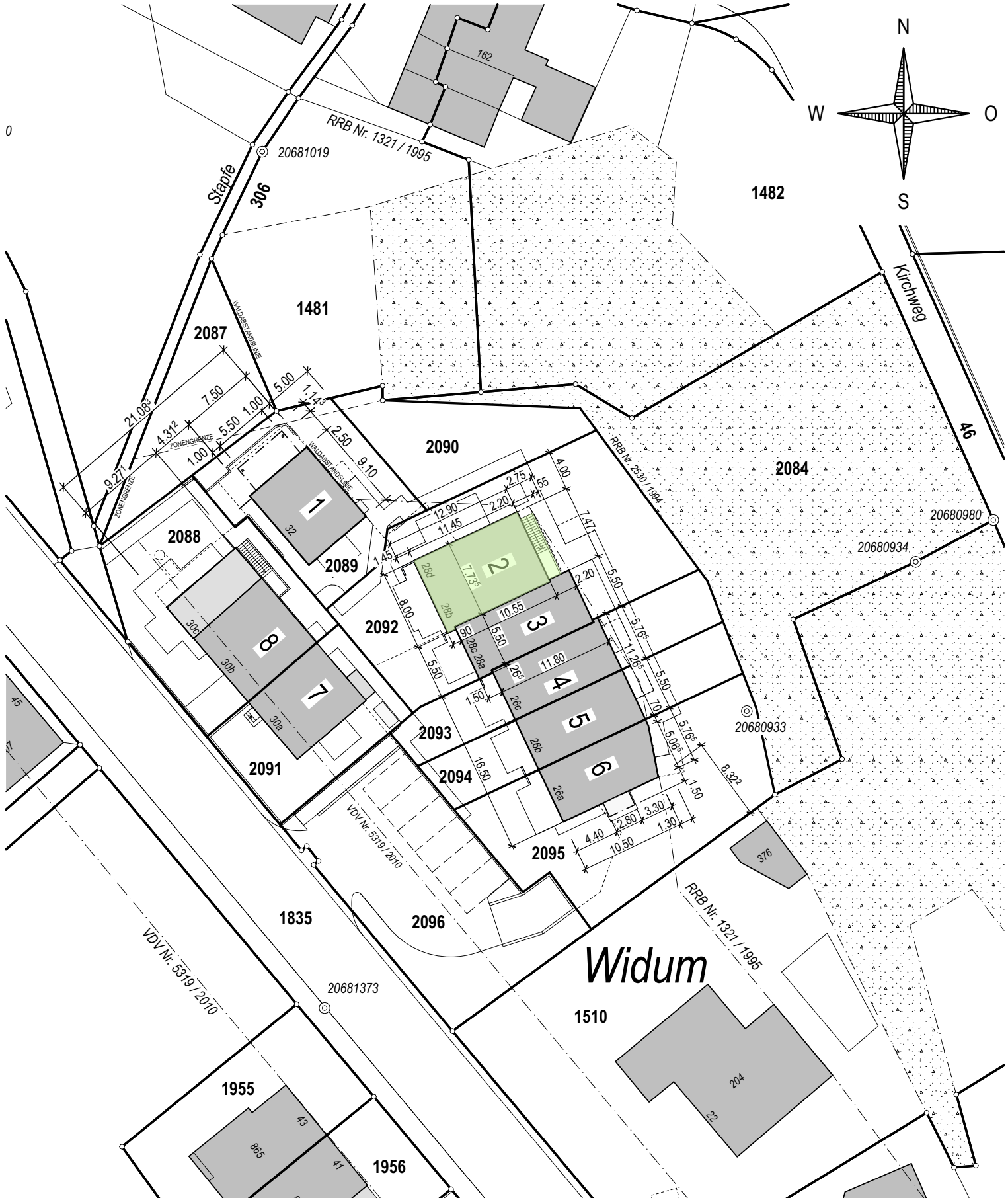
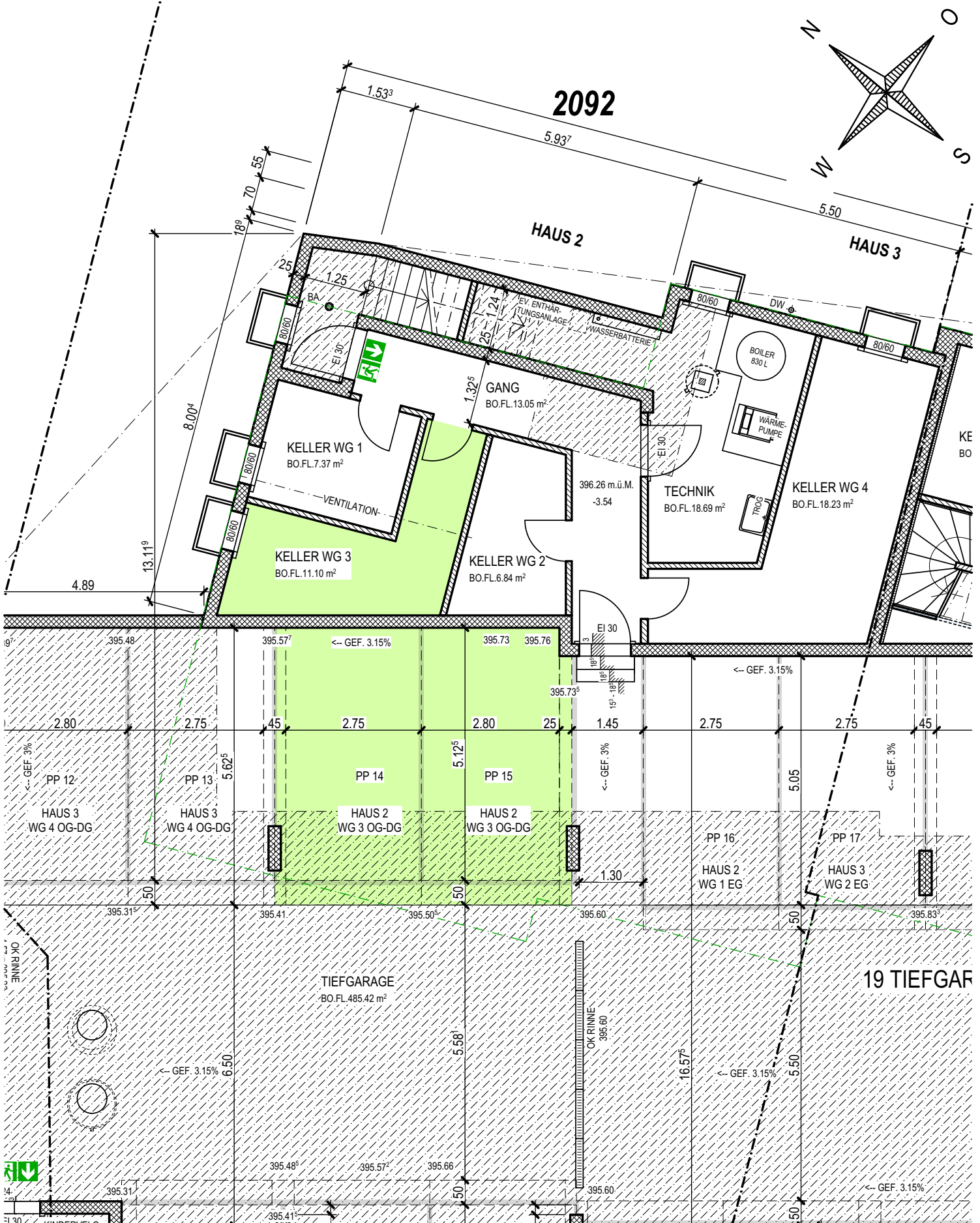


**ÜBERBAUUNG WIDUM**  
 WEIACHERSTRASSE 30, 8427 RORBAS

HAUS 2 WG 3 SITUATION 1:500  
 16.05.2023



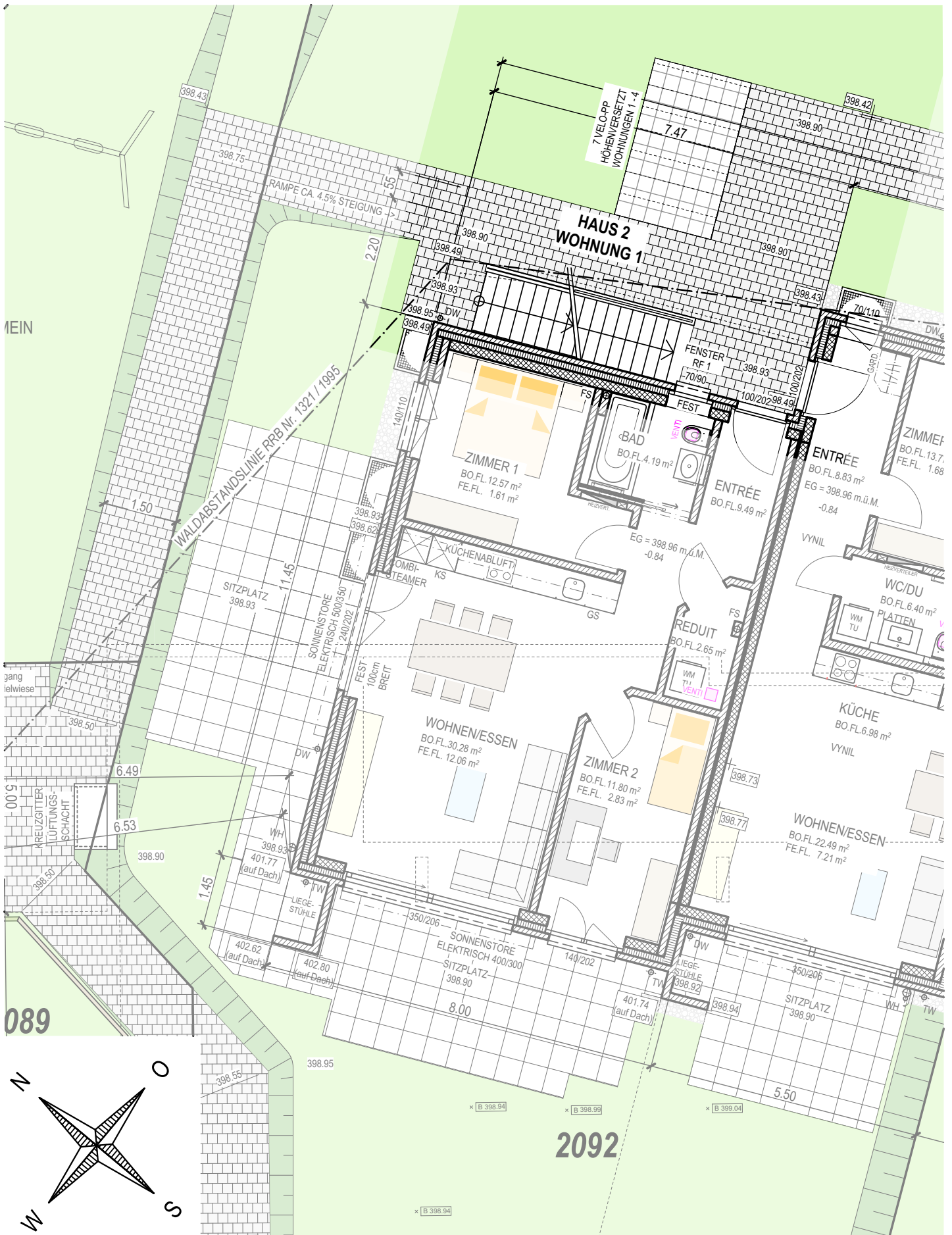


**ÜBERBAUUNG WIDUM**  
 WEIACHERSTRASSE 30, 8427 RORBAS

**HAUS 2 WG 3 ERDGESCHOSS**

1:100

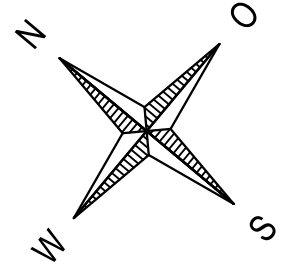
16.05.2023





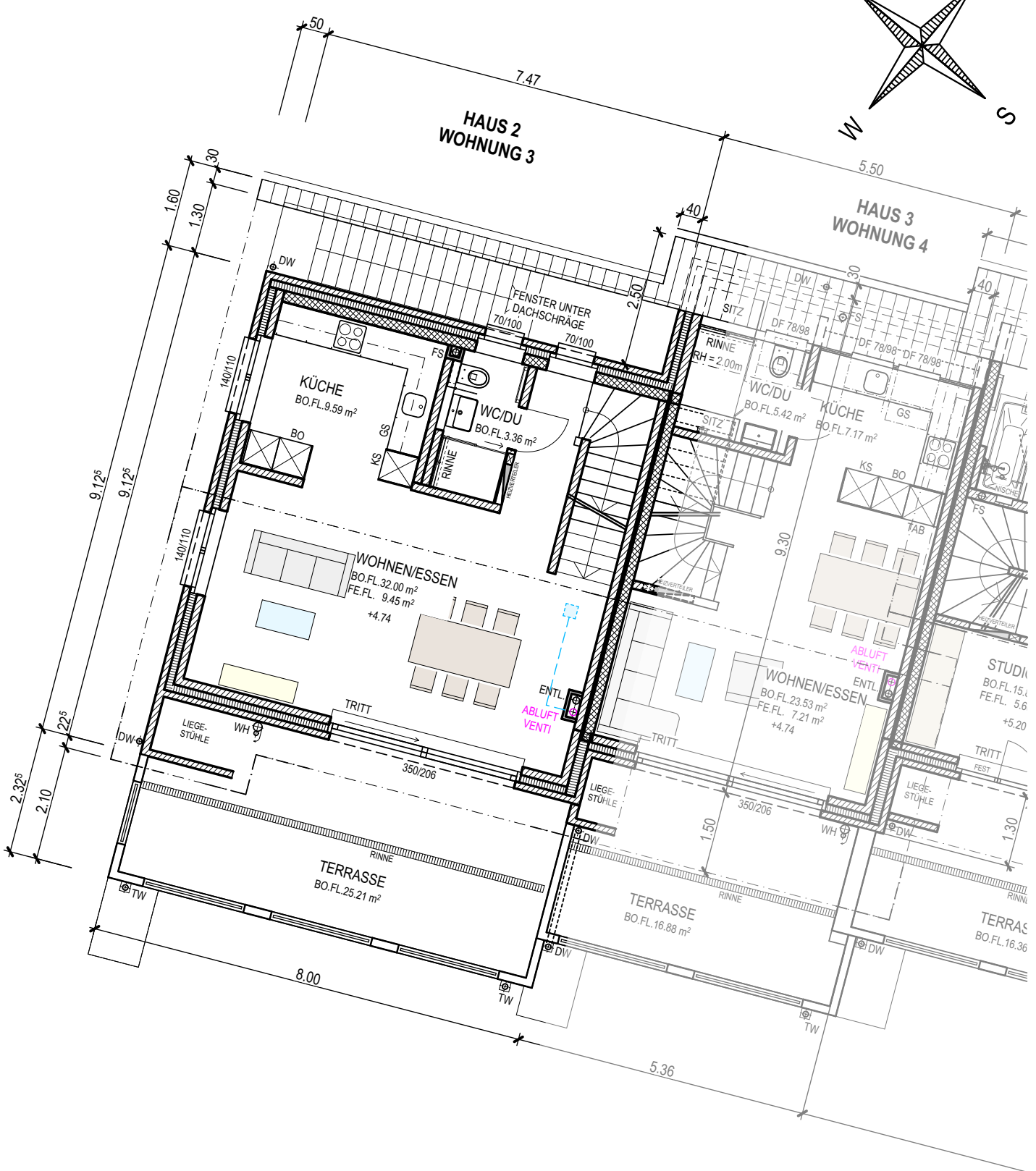
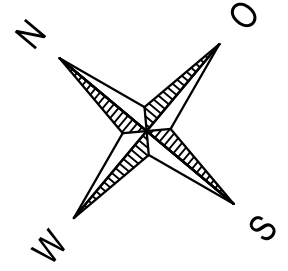
**ÜBERBAUUNG WIDUM**  
 WEIACHERSTRASSE 30, 8427 RORBAS

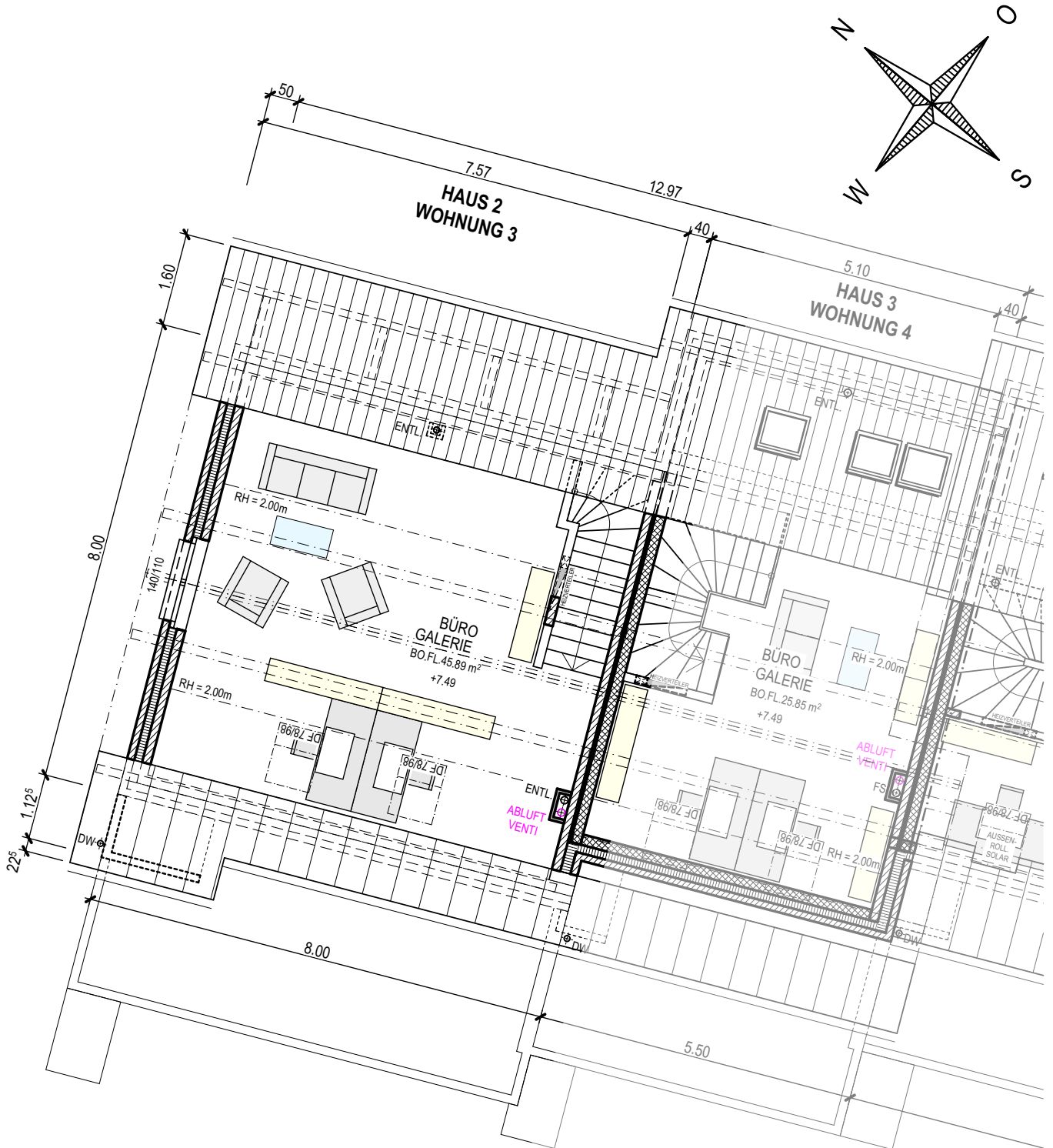
**HAUS 2 WG 3 1. OBERGESCHOSS 1:100**  
 16.05.2023



**ÜBERBAUUNG WIDUM**  
 WEIACHERSTRASSE 30, 8427 RORBAS

HAUS 2 WG 3 2. OBERGESCHOSS 1:100  
 16.05.2023





**ÜBERBAUUNG WIDUM**  
 WEIACHERSTRASSE 30, 8427 RORBAS

**HAUS 2 WG 3 SCHNITT 1:100**  
 16.05.2023



REIHENHAUS HAUS 2



**biber manz**  
architektur ag

Eschlikerstrasse 20 CH-8474 Dinhard  
T +41 52 235 13 13  
info@bibermanz.ch www.bibermanz.ch

**pewiHAUS**

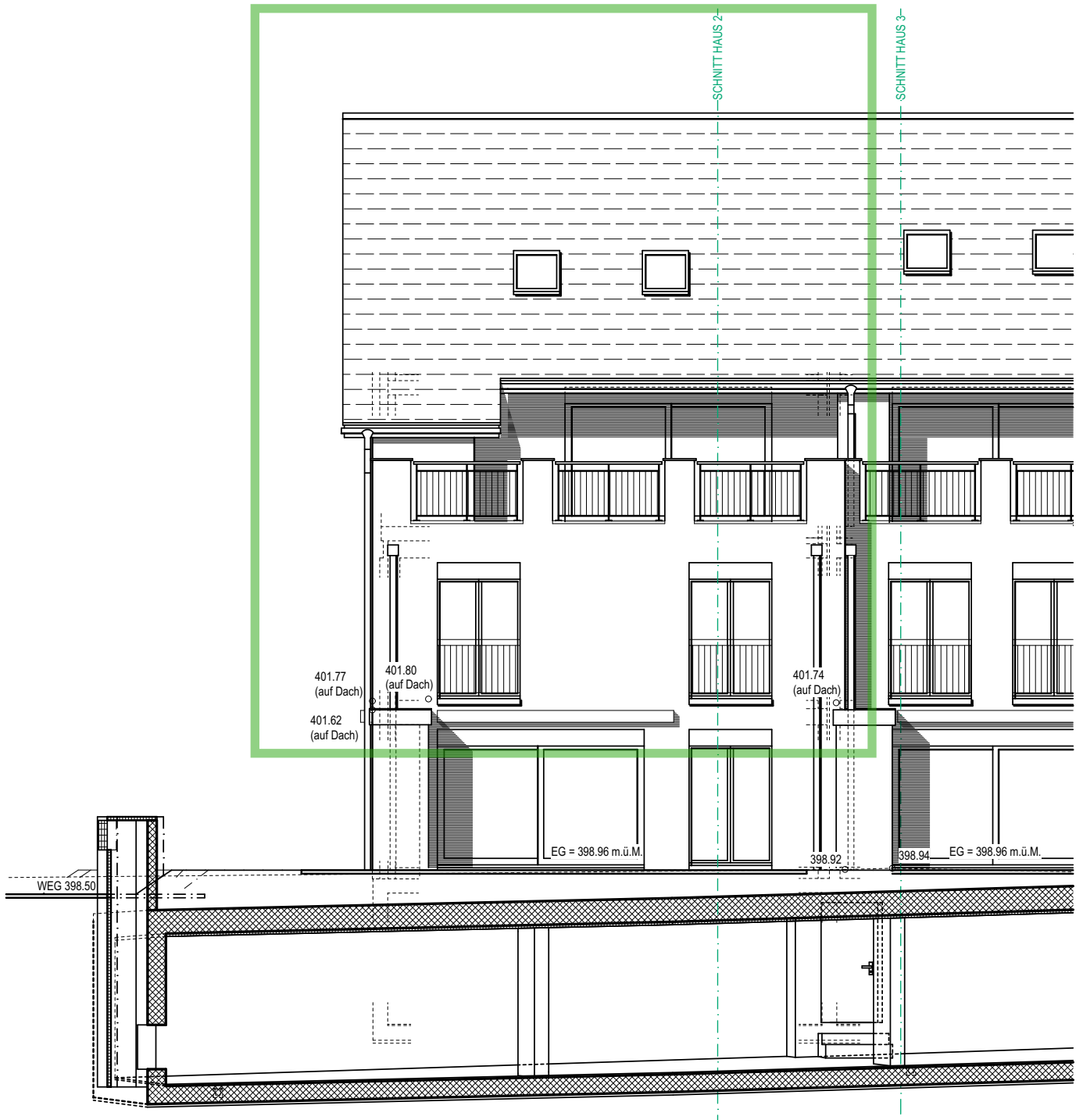
DINHARD / ZH

# ÜBERBAUUNG WIDUM

WEIACHERSTRASSE 30, 8427 RORBAS

# HAUS 2 WG 3 SÜDWESTANSICHT 1:100

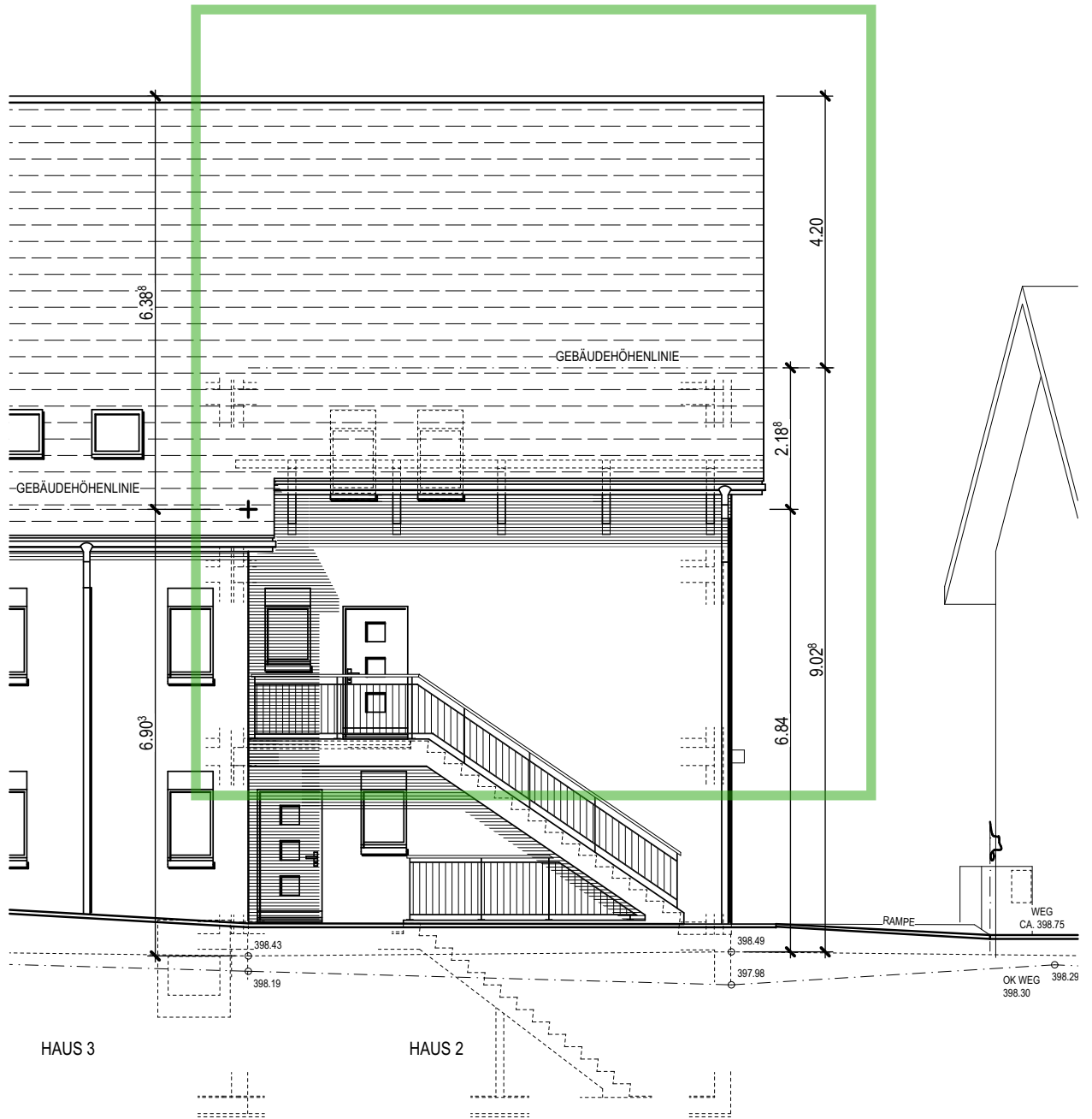
16.05.2023





**ÜBERBAUUNG WIDUM**  
 WEIACHERSTRASSE 30, 8427 RORBAS

**HAUS 2 WG 3 NORDOSTANSICHT 1:100**  
 16.05.2023





**biber manz**  
architektur ag

Eschlikerstrasse 20 CH-8474 Dinhard  
T +41 52 235 13 13  
info@bibermanz.ch www.bibermanz.ch

**pewiHAUS**

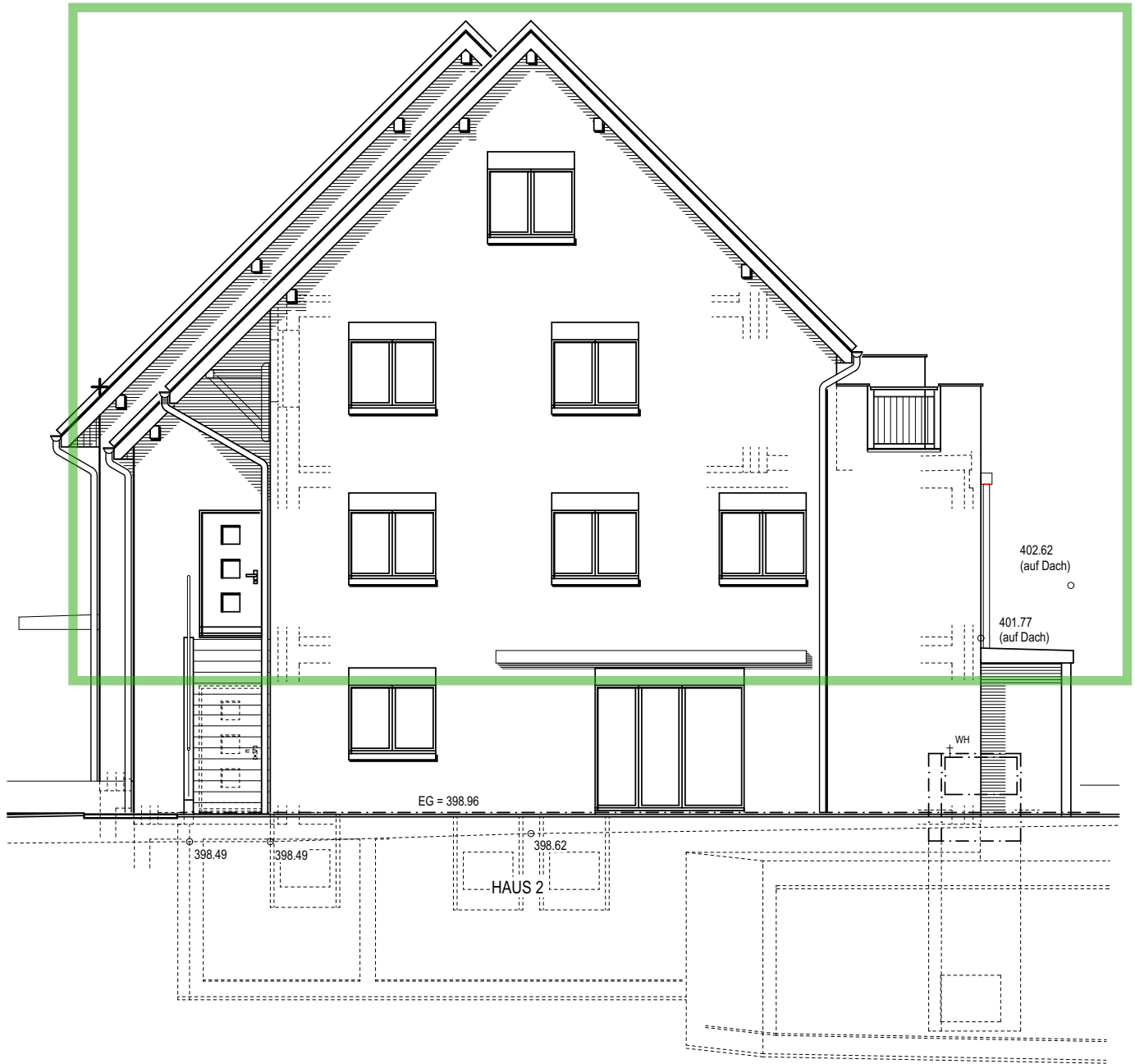
DINHARD / ZH

**ÜBERBAUUNG WIDUM**  
WEIACHERSTRASSE 30, 8427 RORBAS

HAUS 2 WG 3 NORDWESTANSICHT

1:100

16.05.2023



NORDWESTFASADE